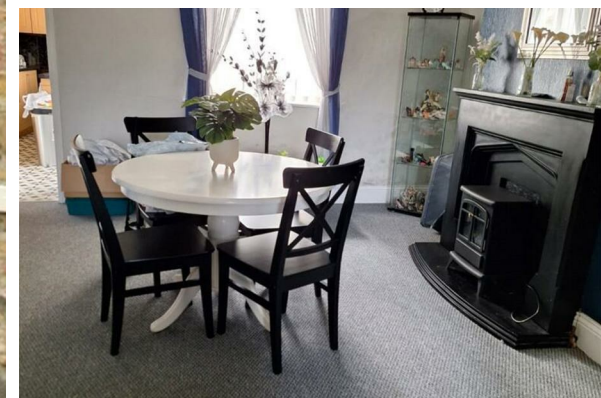


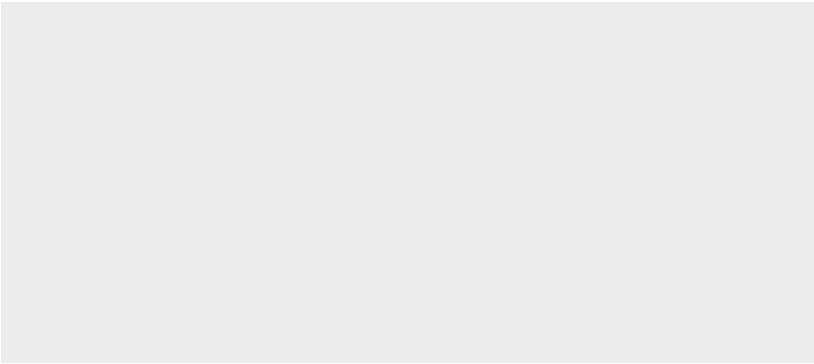


TO LET

15 Manor Street, Evenwood, DL14 9QB

£55,000





## THE PROPERTY

The accommodation comprises of entrance hallway with the stairs rising to the first floor, a living room, dining room and kitchen to the rear featuring a selection of floor and wall mounted units with worktops, tiled splash backs and integrated appliances that include a hob with oven below and sink.

On the first floor there are two bedrooms and the house shower room/wc. Externally there is an enclosed rear yard with two outbuildings.

Manor street lies in the centre of the village which boasts a number of local amenities that include a couple of convenience sized supermarkets, food outlets, beauty shops, two primary schools - both rated as "Good" by Ofsted, a garage and pub. Evenwood also lies a short distance from both the retail park at Tindale and Bishop Auckland town centre.

Property details provided by JW Wood

EPC rating: D

Council Tax Band: A

Tenure: Freehold

For Sale By Auction [www.agentspropertyauction.com](http://www.agentspropertyauction.com) Taking Bids Now OPTION 2

## SITUATION

### Directions